

Configuring Android OS Devices for Exchange 2010

Updated 7/10/2013

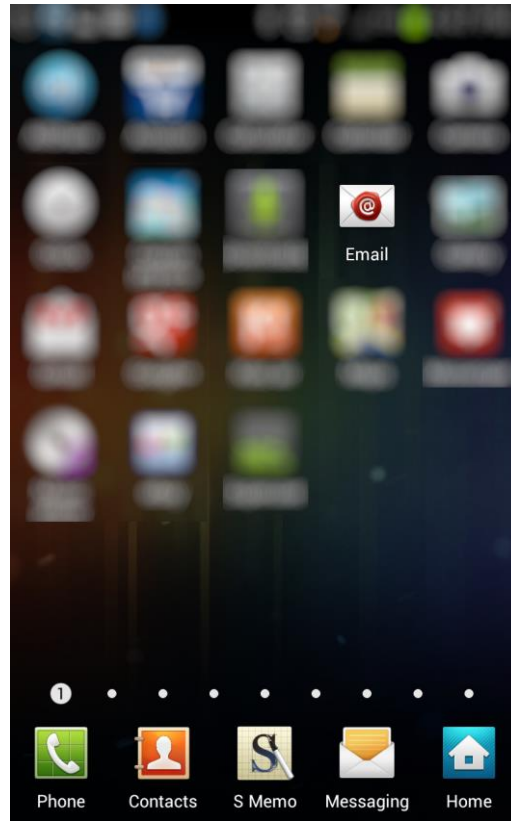
NOTE: Not all Android devices, operating systems, and email applications are created equal. This document was configured using the Android OS 4.x. While configuration for other versions of Android should be similar, they may not follow this configuration documentation precisely.

DISCLAIMER: Connecting your phone to your mailbox via this method will require that you accept the default mobile device security policy enforced by the Cyber Security Program Office. This policy requires that a passcode lock be implemented on your mobile device screen which locks your screen and after 15 minutes of inactivity. For more information on this policy, please review the “Terms of Service” tab on the following web page <http://inside.anl.gov/services/mobile-devices>

If you do not want to enable this security feature, please do not move forward with this configuration.

1. If you are on-site and have WiFi enabled, make sure you have registered the device on the ANL WiFi network by opening your browser, browsing to any website, and filling out the web form that appears.
2. If you have a Zimbra mailbox already configured, it is recommended that you delete that account from your device before creating a new Exchange connection. This will prevent conflicts and duplicate messages.

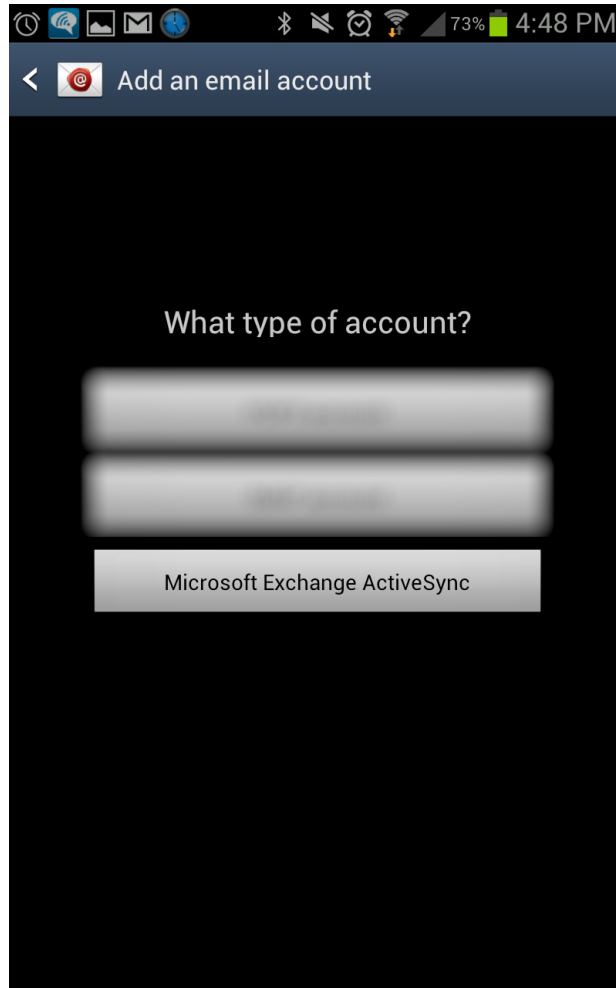
3. Find and open the Email icon on your Android device.



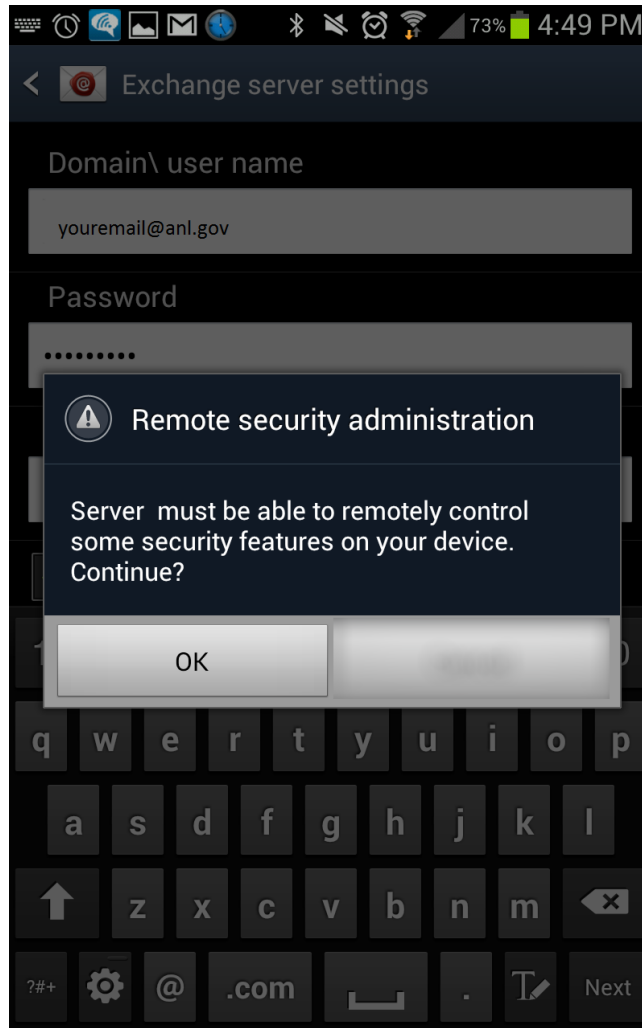
4. Enter your default ANL domain email address and password. If you are unsure of your default email address, use username@anl.gov, where “username” is your ANL domain log in (i.e. the account you use to access the Inside Argonne web portal). Child domain addresses and accounts such as @aps.anl.gov, @mcs.anl.gov and @zimbra.anl.gov should not be used.

The screenshot shows the 'Set up email' screen on an Android device. The status bar at the top indicates 73% battery and 4:48 PM. The screen has a dark background with white text. The title bar says 'Set up email' with an '@' icon. Below the title, it says 'You can configure email for most accounts in a few steps'. There are two input fields: 'Email address' with the text 'youremail@anl.gov' and 'Password' with asterisks. A 'Show password' checkbox is checked. At the bottom, there are two buttons: 'Manual setup' and 'Next' with a green arrow icon.

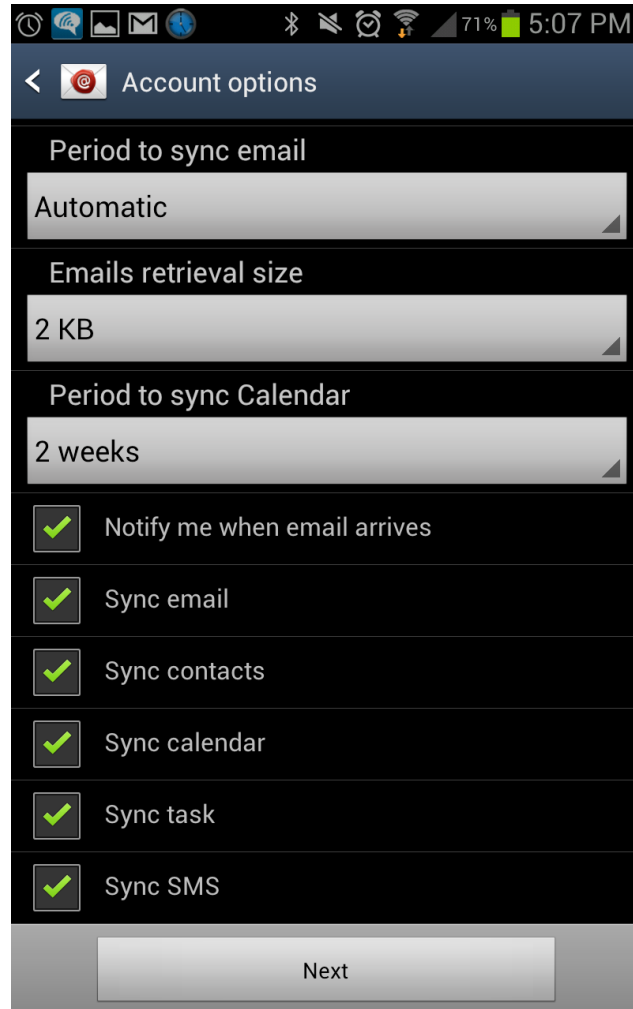
5. Choose the account type “Exchange” or “Microsoft Exchange ActiveSync”



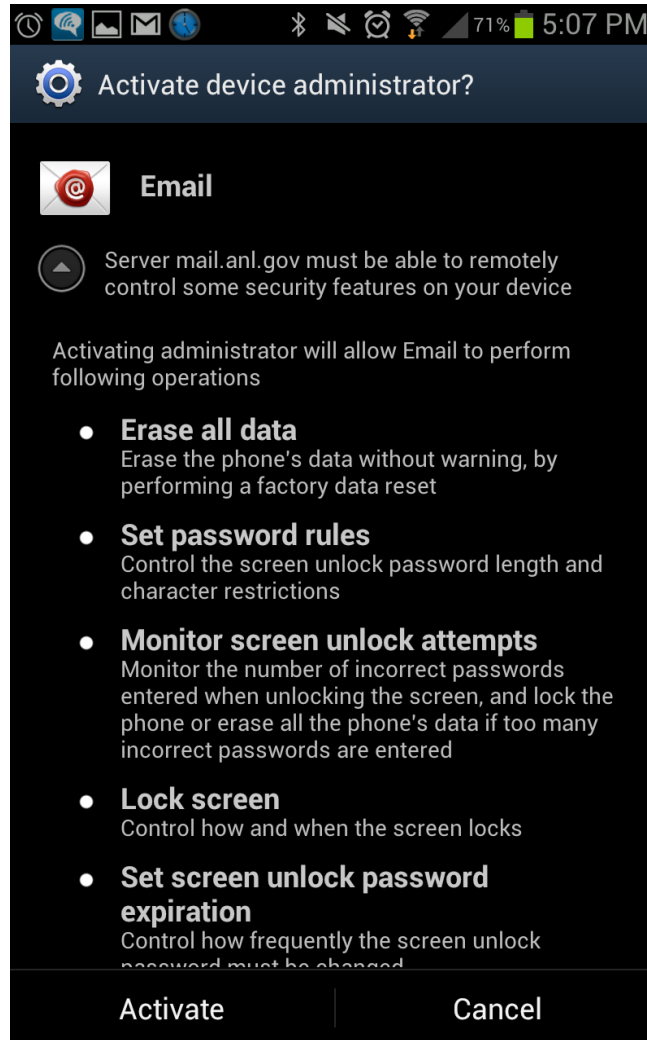
6. Accept the remote Security Administration Features. The only security ANL imposes at this time is a 4 character passcode screen lock on your device.



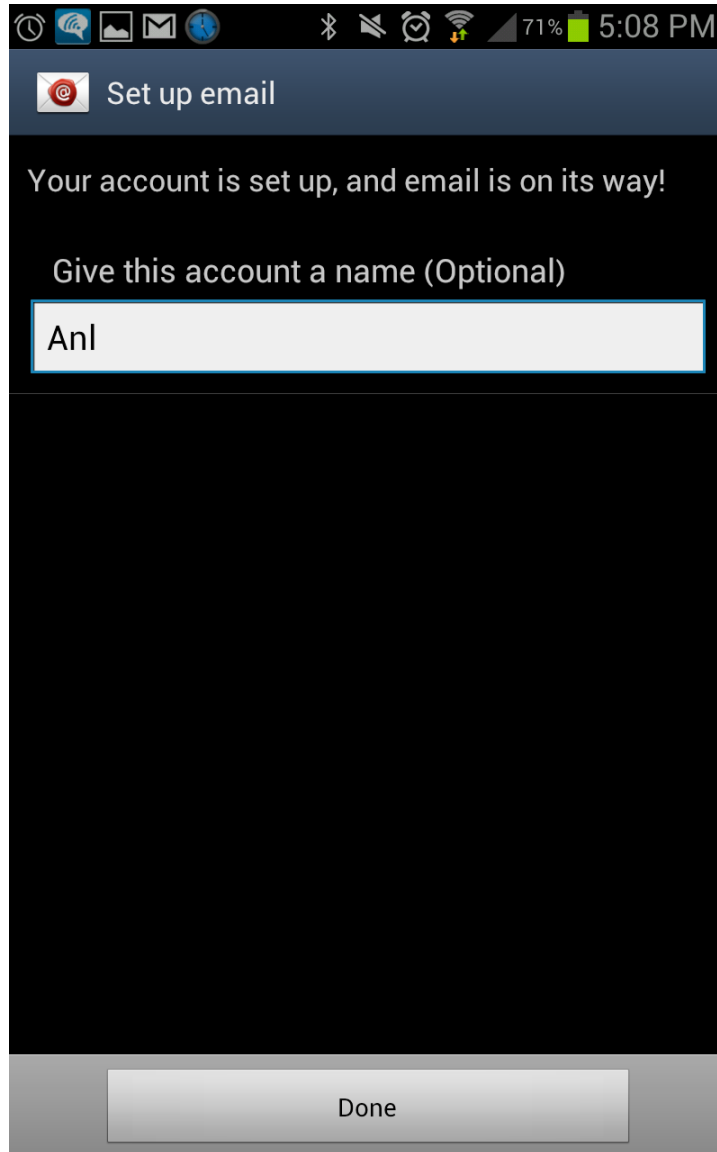
7. Choose your synchronization options and Click "Next"



8. Activate the Device Administrator by choosing "Activate". Then set your 4 character pin



9. Name the account, and click "Done" to finish the configuration



10. If you cannot connect, it may be due to the fact that your Android phone did not display the RSA notification in step 5. You should be able to find and accept this notification in the "Notifications" section of your phone, which is accessible from the menu button.