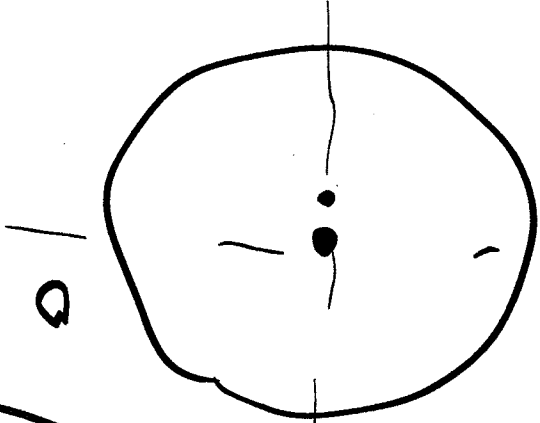
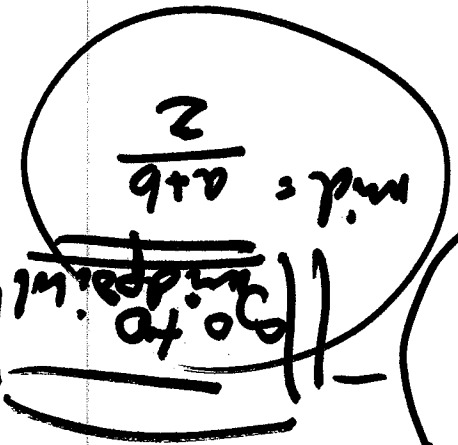
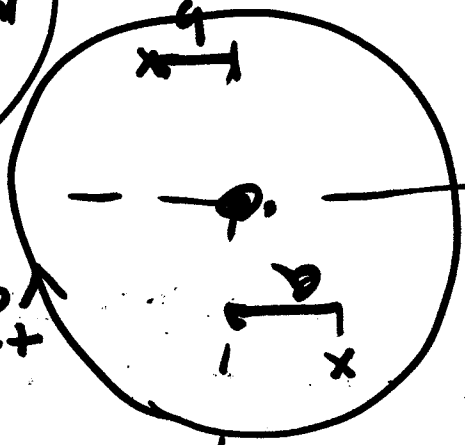


3



adjust with
after 2

2



$\frac{2}{a+b} = \text{mid}$

Go to mid. with

90 74.2
90 67.0

$SMK = 58$

1

7

Check with full rotation

6

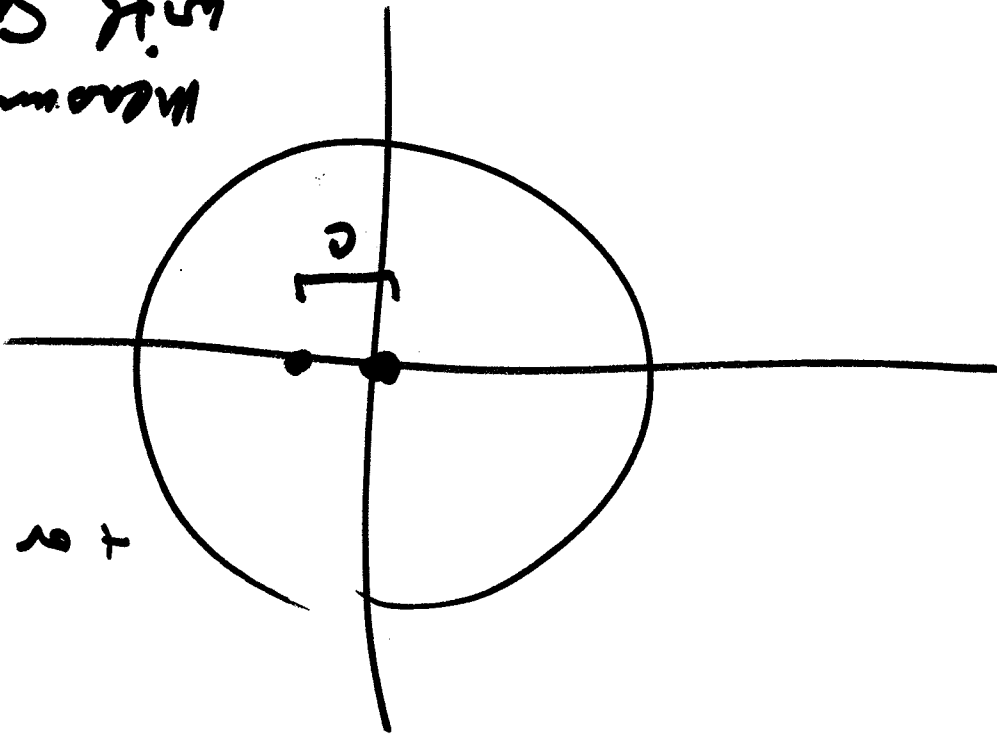
do -50 to 90 at 10 (water 2)
converts again

5

more Spink to re-center on object.

by c

Measure
with Spink
but go back to
adjust after



+ or -

4